

Schwimmerventile



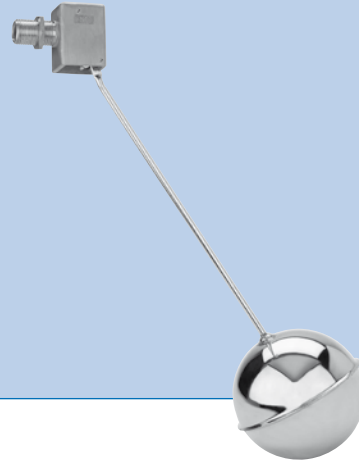
FLOATING VALVES

TECHNISCHE DATEN:

- Gehäuse Hebel und Kugel Edelstahl AISI316
- Gewindeanschluß 1" AG(ISO 7/1)
- Dichtung Silikon
- Voller Durchgang
- Nenndruck PN10
- Betriebstemperatur -20°C bis 150°C

TECHNICAL FEATURES:

- BODY VALVE AND METALLIC PARTS: STAINLESS STEEL AISI 316
- THREADED END: GAS MALE ACCORDING TO UNI ISO 7/1
- SILICONE SEALING
- FULL BORE
- NOMINAL WORKING PRESSURE: 10 BAR
- WORKING TEMPERATURE: -20°C - +150°C



Masse und Gewichte

DIMENSIONS AND WEIGHTS

Ventil • VALVE

Nennweite Size R	DN	Masse in mm Dimensions in mm		Gewicht kg Weight in kg	Verpackungseinh. Carton quantity
		A	L		
1/2"	15	35	410	0,80	1
3/4"	20	42	500	1,50	1
1"	25	45	580	1,55	1
1"1/4	32	52	580	1,75	1
1"1/2	40	60	620	4,15	1
2"	50	70	720	4,45	1
2"1/2	65	80	720	5,10	1

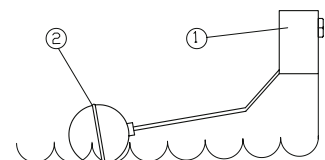
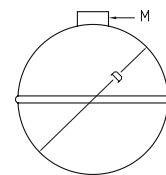
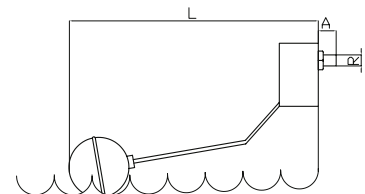
Kugel • FLOAT

Nennweite Size	DN	Masse in mm Dimensions in mm		Gewicht kg Weight in kg	Verpackungseinh. Carton quantity
		D	M		
1/2"	15	110	M-6	0,25	1
3/4"	20	160	M-8	0,50	1
1"	25	160	M-8	0,50	1
1"1/4	32	160	M-8	0,50	1
1"1/2	40	200	M-12	0,70	1
2"	50	200	M-12	0,70	1
2"1/2	65	200	M-12	0,70	1

Werkstoffe

CONSTRUCTION FEATURES

N.	Bauteil Components	Material Material
1	Valvola • Valve	Acciaio Inox. 316 • SS 316
2	Galleggiante • Floating	Acciaio Inox. 316 • SS 316



KUGEL/ FLOAT

Rif. /Ref.	PN	Maße/Dimensions (mm)		Gew./Weight (Kg)
		Ø D	M	
H2852110	10	110	M-6	0.25
H2852160	10	160	M-8	0.50
H2852200	10	200	M-12	0.70

DURCHFLUSS IN L/h // CAUDAL IN LITRE / HOUR

Rif. /Ref.	DRUCK (BAR) / PRESSURE (BAR)						
	1	2	3	4	6	8	10
H285103	1.132	1.669	1.904	2.169	2.656	2.825	3.082
H285104	2.829	3.998	4.895	5.657	6.790	7.978	8.938
H285105	4.838	6.842	8.370	9.677	11.805	13.993	15.289
H285106	6.934	9.919	12.147	14.068	17.167	19.654	21.945
H285107	10.176	15.438	19.438	23.154	28.908	33.594	38.168
H285108	15.566	21.948	26.928	31.104	37.635	43.657	51.516
H285109	23.685	33.863	40.977	47.372	57.791	67.532	75.500
H285110	24.869	35.556	43.025	49.740	60.680	70.908	79.275