

Edelstahlflansche



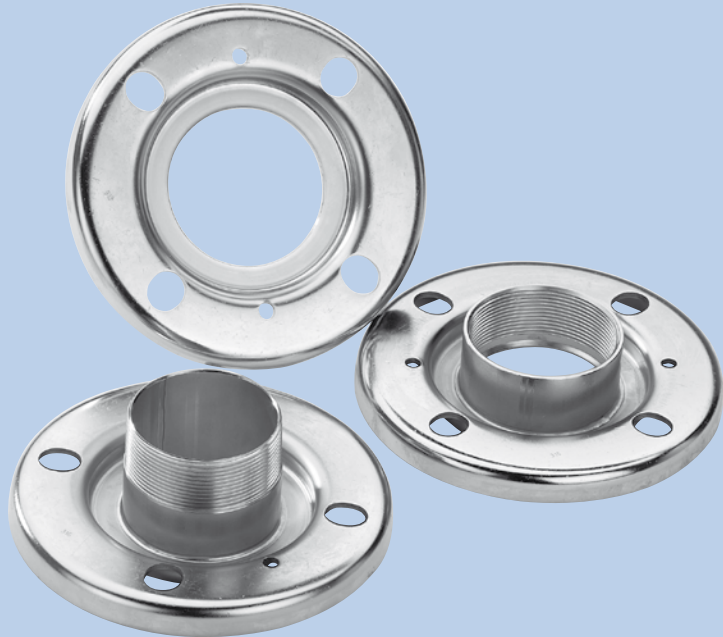
FLANSCHEN AUS EDELSTAHLBLECH FLANGES FROM PRESSED STAINLESS STEEL

TECHNISCHE DATEN

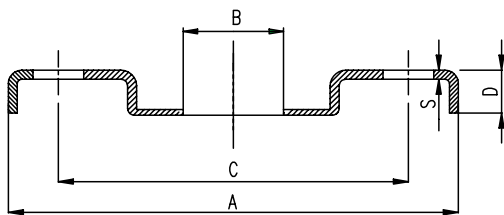
- Werkstoff: Edelstahl AISI304 (316 auf Anfrage)
- WIG geschweißt ohne Zusatzmaterial
- Gewinde nach UNI/ISO 228
- Nenndruck: PN 16

TECHNICAL FEATURES:

- MATERIAL: STAINLESS STEEL AISI 304
- WELDED JOINTS: MADE WITH TIG METHOD WITHOUT ANY ADDITIONAL MATERIAL
- THREADED MODELS: GAS THREADS UNI ISO 228
- NOMINAL WORKING PRESSURE: 16 BAR



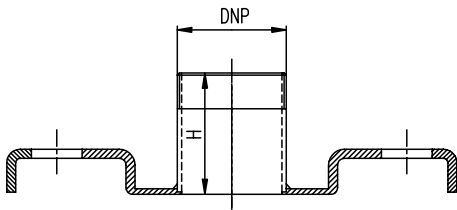
VORSCHWEISSFLANSCHEN LOOSE FLANGE



MASSE UND GEWICHTE DIMENSIONS

Größe Size	DN	Maße in mm Dimensions in mm					Löcher N. holes	Gewicht kg Weight in kg	Verpackungseinh. Carton quantity
		A	B	C	D	S			
1"	25	115	40	85	16	3	0,300	1	
1 1/4"	32	140	50	100	16	3	0,415	1	
1 1/2"	40	150	58	110	16	3	0,465	1	
2"	50	165	69	125	16	4	0,750	1	
2 1/2"	65	185	85	145	18,0	4	0,870	1	
3"	80	200	99	160	18,0	4	0,990	1	
4"	100	225	124	180	19,0	5	1,315	1	

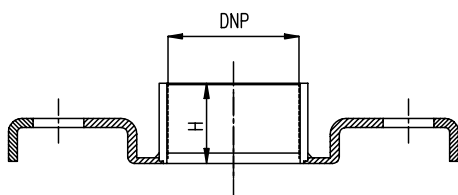
GEWINDEFLANSCH Außengewinde
FLANGE WITH EXTERNAL THREAD



MASSE UND GEWICHTE
DIMENSIONS AND WEIGHTS

Größe Size	DN	DNP	Maße in mm Dimensions in mm						Löcher N. holes	Gewicht kg Weight in kg	Verpackungseinh. Carton quantity
			A	B	C	D	H	S			
1"	25	1" M	115	37	85	16,0	37	3	4	0,370	1
1"1/4	32	1"1/4 M	140	46	100	16,0	41	3	4	0,530	1
1"1/2	40	1"1/2 M	150	54	110	16,0	46	3	4	0,605	1
2"	50	2" M	165	65	125	16,0	52	4	4	0,940	1
2"1/2	65	2"1/2 M	185	81	145	18,0	62	4	4	1,200	1
3"	80	3" M	200	94	160	18,0	72	4	8	1,450	1
4"	100	4" M	225	119	180	19,0	83	5	8	2,177	1

GEWINDEFLANSCH Innengewinde
FLANGE WITH INTERNAL THREAD



MASSE UND GEWICHTE
DIMENSIONS AND WEIGHTS

Größe Size	DN	DNP	Maße in mm Dimensions in mm						Löcher N. holes	Gewicht kg Weight in kg	Verpackungseinh. Carton quantity
			A	B	C	D	H	S			
1"	25	1" F	115		85	16,0	19	3	4	0,435	1
1"1/4	32	1"1/4 F	140		100	16,0	22	3	4	0,610	1
1"1/2	40	1"1/2 F	150		110	16,0	22	3	4	0,695	1
2"	50	2" F	165		125	16,0	25	4	4	1,067	1
2"1/2	65	2"1/2 F	185		145	18,0	57	4	4	1,700	1
3"	80	3" F	200		160	18,0	64	4	8	1,620	1
4"	100	4" F	225		180	19,0	73	5	8	3,510	1